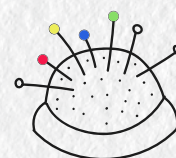


TECHNOLOGICAL SOLUTION FOR POVERTY!

INVENTING A WINTER-WARMER PROTO-TYPE FOR UNDERPRIVILEGED KIDS



PROJECT LOCATION



Sheung Wan & HKU,
Hong Kong

COMMUNITY PARTNER



Lizzie Bee
Foundation

KEY AREAS



Children, Poverty, Life Well-being, Community Arts, Winter Warmer, Heath Pack, Recycled Materials, Technological Solutions

Our Social Mission:

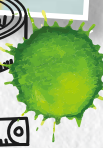
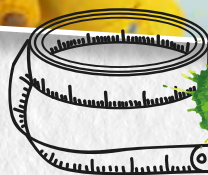
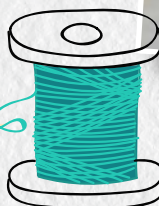
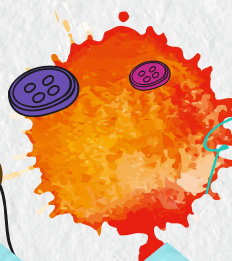
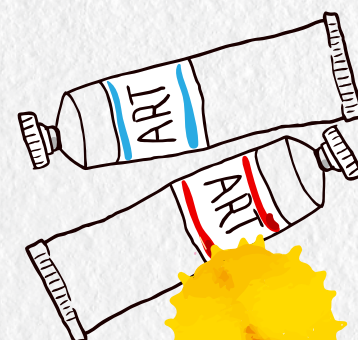
To help invent a warm-keeping prototype that can make an actual difference for underprivileged kids to improve their quality of sleep during cold winter. This winter-warmer needs to be portable, cost-effective, child safe, re-usable, easily connected/disconnected to energy source and able to retain heat for long time.

Student Learning:

Students will learn applying their technological knowledge to develop simple products for helping the needy and tackling social problems.

Project Description:

- Design the product.
- Invent a technical solution.
- Explore the possibility of using solar energy, as everyone has access to sunlight which is free.
- Explore other low cost technical solutions.
- Join the arts workshops to work with kids to make their own sleeves for the winter-warmers using recycled and upcycling materials through weaving, knitting or sewing.
- Explore the mass production method.
- Suggest the pricing and marketing of product for the future social enterprise of the organization.



香港大學
THE UNIVERSITY OF HONG KONG

Gallant Ho
Experiential
Learning Centre