



Designing and Implementing Experiential Learning Course

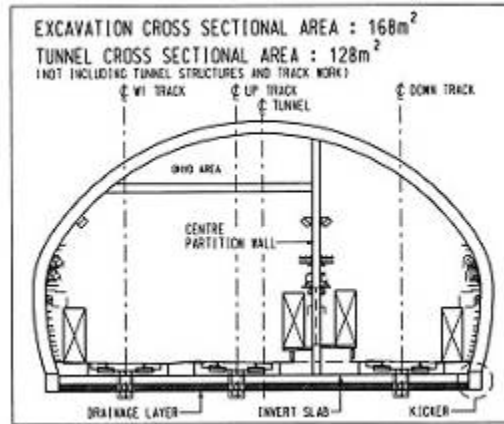
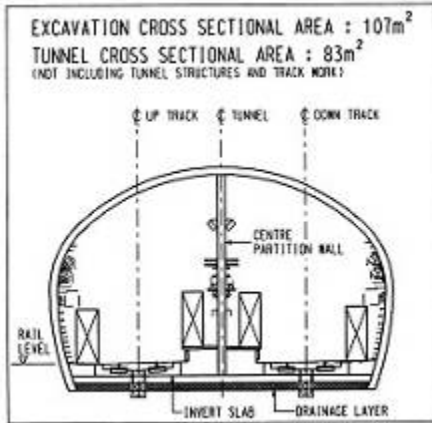
PROJECT MINGDE

明德工程

L G Tham 谭国焕
Department of Civil Engineering 土木系

CIVIL ENGINEERING PROFESSION

土木工程专业的特点



THEORY 理论



PRACTICE 实践

DESIGN 设计



CONSTRUCTION 施工

INTEGRATE 结合为一体?

EXPERIENTIAL LEARNING

体验实习

- **Industrial Training in Summer Semester (since 1914) 工业实习**
 - at least 8 weeks 不少于8个星期
 - attach to engineering firms 到本专业的公司上班
- **Engineering Design & Communication (ED&C) (since 1997) 工程设计及交流**
 - a project-based course for two semesters in 2nd Year 在第二学年开设，持续两个学期，围绕工程项目
 - internal and external (industrial) tutors 由校内外专业人士指导
- **Inter-Disciplinary Design Project (IDDP) (since 2002) 综合设计项目**
 - a project-based course for two semesters in 3rd Year 在第三学年开设，持续两个学期，围绕工程项目
 - professional tutors in different disciplines (architecture, building services) 由不同专业（如建筑和设备等）的专业人士共同指导

PROJECT MINGDE : A PLATFORM FOR EXPERIENTIAL LEARNING

明德工程 —— 体验实习的平台

***Bringing the real project into classroom
vice versa***

Bringing the classroom into the project
将真实工程带入课堂里
将课堂开设在项目之中



PROJECT MINGDE : A PLATFORM FOR EXPERIENTIAL LEARNING

明德工程 —— 体验实习的平台

***Project* 项目**

Funding 资金

Construction cost 建筑费用

Expenses of the students/staff 师生差旅去费

Timing and Scale 项目期限及规模

Integration with the curriculum 与课程结合

Liability and Responsibility 责任

Students/Parents 学生家长

Stakeholders 持份者

PROJECT MINGDE : A PLATFORM FOR EXPERIENTIAL LEARNING

明德工程 —— 体验实习的平台



PROJECT MINGDE : A PLATFORM FOR EXPERIENTIAL LEARNING

明德工程 —— 体验实习的平台

Projects managed by students

working as a team

以大学生助建小组名义运作

- Led by a Project Manager 项目经理统筹
- Supervised by professional alumni and teaching staff 教师和校友工程师担任导师
- Coordinated by senior students and graduates 资深组员和毕业生担任联络员
- Design, tender, construction, management and supervision 全程参与设计、招标、施工、管理到验收 [»](#)
- Credit bearing and non-credit bearing 修学分/不修学分



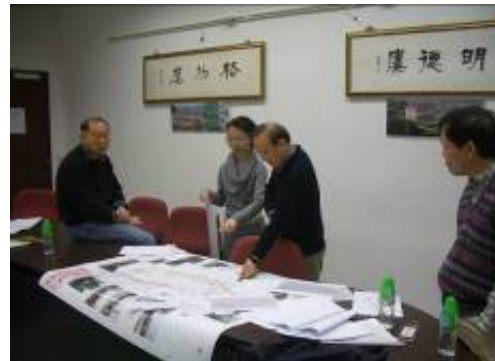
PROJECT MINGDE : A PLATFORM FOR EXPERIENTIAL LEARNING

明德工程 —— 体验实习的平台

Assessment

工作考评

- Scheme design accepted by stakeholders 设计方案要被持份者接受
- Detail design approved by regulatory bodies 施工图和计算书要经设计院审查批准
- Construction quality scrutinized by government officials 施工质量要经政府质检部门验收
- Project completion within budget (cost and time) 工程要按计划和资金预算完成



PROJECT MINGDE : A PLATFORM FOR EXPERIENTIAL LEARNING

明德工程 —— 体验实习的平台

Integration with curriculum

与本科课程互动和结合

| Mingde Projects 明德工程 | Year | Curriculum 本科课程 |
|---|----------------------|---|
| Mingde Building 明德楼 Design 设计 Construction 施工 | 2004 2005 | Industrial Training 工业实习 Industrial Training 工业实习 |
| Gewu Building 格物楼 Design 设计 Construction 施工 | 2006 2007 | IDDP 综合设计项目 |
| ZD Kindergarten 正东街幼儿园 Scheme Design 方案 Detailed Design 设计 Tender & Construction 招标和施工 | 2008 2009 2010 | IDDP 综合设计项目 Industrial Training 工业实习 Industrial Training 工业实习 |

明德工程 —— 体验实习的平台

- Through **planning, design, management of construction** and until completion of a real project, students gain **a sense of ownership and satisfaction** of the project
通过规划, 设计, 建设管理, 直到完成一个真实的项目, 学生能拥有该项目而自豪
- Improvement in communication skill when meeting with people from **different social and cultural backgrounds**
改善与来自不同社会和文化背景的人沟通的技巧
- Promotion of **teamwork and multi-disciplinary cooperation**
促进团队协作和跨 学科的协作

PROJECT MINGDE : A PLATFORM FOR EXPERIENTIAL LEARNING

明德工程 —— 体验实习的平台



MINGDE PROJECTS: A PLATFORM FOR EXPERIENTIAL LEARNING

明德工程——体验实习的平台

Mingde Building 明德楼 **24 students 组员** **8 visits 次访问**
团

Gewu Building 格物楼 **50 students 组员** **10 visits 次**
访问团

Zhengdong 正东街幼儿园 **200 students 组员** **25 visits 次访问**
团



PROJECT MINGDE : A PLATFORM FOR EXPERIENTIAL LEARNING

明德工程 —— 体验实习的平台

ON-GOING PROJECTS

进行中项目



PROJECT MINGDE : A PLATFORM FOR EXPERIENTIAL LEARNING

明德工程 —— 体验实习的平台



PROJECT MINGDE : A PLATFORM FOR EXPERIENTIAL LEARNING

明德工程 —— 体验实习的平台



PROJECT MINGDE : A PLATFORM FOR EXPERIENTIAL LEARNING

明德工程 —— 体验实习的平台



PROJECT MINGDE : A PLATFORM FOR EXPERIENTIAL LEARNING

明德工程 —— 体验实习的平台



**YINGDONG
FOOTBRIDGE**

英洞村桥



MINGDE PROJECTS: A PLATFORM FOR EXPERIENTIAL LEARNING

明德工程——体验实习的平台

CHALLENGES 挑战

Sustainability 可持续性

- **Projects 项目**
- **Support of charity foundations and alumni 校友和慈善基金源源不断的支持**
- **Support of the University 大学的支持**
- **Integration of “CURRICULUM” WITH “CO-CURRICULUM” 课程与义务工作相结合**

PROJECT MINGDE : A PLATFORM FOR EXPERIENTIAL LEARNING

明德工程 —— 体验实习的平台

CHALLENGES 挑战



SAFETY
安全



江苏省船舶人院建设项目方案审查意见

意见处理情况
无宁学院承担本项目船院与院院建设事宜，由宁院负责，由院院负责平面设计，院院负责。

2009-02-09

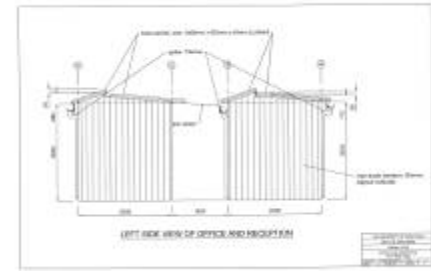


建设项目环境影响登记表
(备案登记表)

建设单位：南京信息工程大学
建设单位：南京信息工程大学

编制日期：2011年6月12日
编制单位：南京信息工程大学

2011-06-12



-MASTER PLAN-

BUREAUCRACY
官僚

LOCAL PROJECT
本地工程

PROJECT MINGDE : A PLATFORM FOR EXPERIENTIAL LEARNING

明德工程 —— 体验实习的平台

Project Mingde also wish to provide schooling opportunities for the children in distant and less fortunate regions in China.

Through proper learning and training at schools, we hope that local students can recognize their talents and potentials leading to a brilliant and fruitful future.

明德工程希望为山区孩子提供教育机会。通过在校学习和培训，孩子们认识到自己的天赋和潜力争取辉煌的和富有成果的未来。



建屋育人

We grow as we build

PROJECT MINGDE : A PLATFORM FOR EXPERIENTIAL LEARNING

明德工程 —— 体验实习的平台

Internal 校内

Mr. P.K.K. Lee
Professor L.G. Tham
Professor A.K.H. Kwan
Dr. R.K.L. Su
Dr. D.J. Guo
Dr. Y.P. Huang
Dr. A.H.K. Law.
Dr. G.C.H. Wong

External 校外

Professor C.F. Lee
Dr. Nicolas S.Y. Yeung

Donor 赞助人

Activist Association
Mr. Alan W. K. Wong
Mr. James Chiu
Lee Hysan Foundation &
Dr. K.S. Louie
Operation Concern Ltd &
Professor P.C. Leung

Consultant 顾问

Architect Alex C. W. Lui
Architect Vinco S. H. Mung
Architect Joseph M.K. Tang
Engineer Tom T.Y. Ho
E&M Engineer Daniel P.C. Chan
Quantity Surveyor Peter Y.Y. Ng
Contract Advisor Andy Y.B. Lee
Site Supervision S. Chan
Engineer (China) M. Wang



PROJECT MINGDE : A PLATFORM FOR EXPERIENTIAL LEARNING

明德工程 —— 体验实习的平台

SITE RECONNAISSANCE

现场考查



ENGAGEMENT OF STAKEHOLDERS

与持份者交流



PROJECT MINGDE : A PLATFORM FOR EXPERIENTIAL LEARNING

明德工程 —— 体验实习的平台

LECTURE & TUTORIAL

授课及导修



PROJECT MINGDE : A PLATFORM FOR EXPERIENTIAL LEARNING

明德工程 —— 体验实习的平台



DESIGN PHASE

设计



PROJECT MINGDE : A PLATFORM FOR EXPERIENTIAL LEARNING

明德工程 —— 体验实习的平台

SITE SUPERVISION

监理



PROJECT MINGDE : A PLATFORM FOR EXPERIENTIAL LEARNING

明德工程 —— 体验实习的平台



OTHER LEARNING EXPERIENCE

其他学习经验



PROJECT MINGDE : A PLATFORM FOR EXPERIENTIAL LEARNING

明德工程 —— 体验实习的平台

CELEBRATION

庆祝



PROJECT MINGDE : A PLATFORM FOR EXPERIENTIAL LEARNING

明德工程 —— 体验实习的平台

DONOR 捐助者

- **PRIVATE DONOR 个人捐助者**
- **NON-GOVERNMENT ORGANIZATION 非政府组织**
- **FOUNDATIONS 基金**
- **ALUMNI AND FRIENDS 校友**

PROJECT MINGDE : A PLATFORM FOR EXPERIENTIAL LEARNING

明德工程 —— 体验实习的平台

PROJECT MINGDE明德工程

- STUDENTS 学生**
- STAFF 老师**
- ALUMNI & FRIENDS (ENGINEERS; ARCHITECTS; QUANTITY SURVEYORS) 校友**

PROJECT MINGDE : A PLATFORM FOR EXPERIENTIAL LEARNING

明德工程 —— 体验实习的平台

STAKEHOLDERS 持份者

- **SCHOOL : TEACHER/PARENT 师生**
- **LOCAL COMMUNITY 当地人氏组织**
- **LOCAL GOVERNMENT 当地政府**

- **NON-GOVERNMENT ORGANIZATION 非政府组织**